

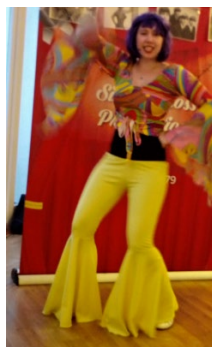
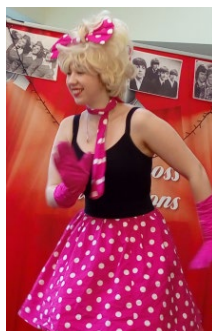
SOMERSET HOUSE NEWSLETTER



SUMMER 2019 | ISSUE 18

IT'S SHOWTIME!

Although the Show started rather later than we had hoped it was well worth the wait. The spring “Be-Bop-a-Lula”, show from The Entertainment Providers, was a high energy, fun, memory evoking colourful spectacular! Polly, the performer, was very accomplished and versatile in her performance of hits from the 50's, 60's, 70's and 80's.



We were also lucky enough to be offered a late booking of their Summer Variety Show. It was a lovely treat in the week following our Summer Garden Party.

A thoroughly enjoyable show, full of fun, song, dance and audience participation – including the staff! And super cool hats to wear! Next the Autumn show, “Let's Go to the Movies”, to look forward to.



Activities & Entertainment

Seated Dance

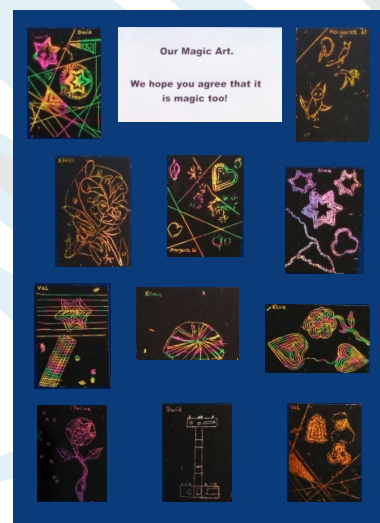
We are continuing our monthly seated dance sessions with Polly, enjoying a different style of dance each month. We have gone from Maypole and Morris dancing in May, through to summer tropical hula, flamenco and samba in August with a little bit of ballroom in between.



We have a barn dance, “Bollywood” Indian dance, firework themed dance and a winter wonderland Waltz to look forward to for the rest of the year.

Craft

We had a highly imaginative afternoon making pictures just using a piece of card, a glue stick, a pair of scissors and the main ingredient – a toilet roll. And what an interesting variety of results we had – well done all.



Our Magic art and egg box flowers modelled by Alma. Just a small selection of our recent craft projects.

Our Garden

Earlier in the year we had some indoor gardening sessions to make paper seedling pots, sow seeds and pot on plants for our raised beds and planters. We are now enjoying the fruits of our

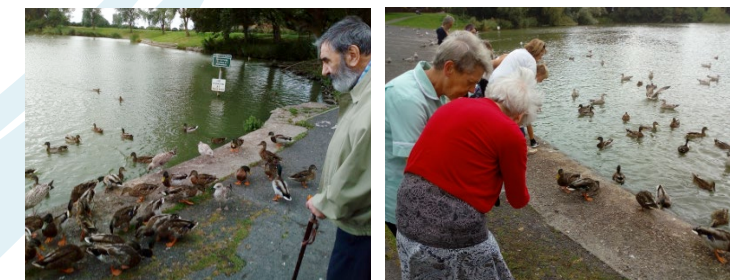


labours with fresh herbs and lovely, tasty runner beans. The tomato plants have lots of fruit just waiting to ripen and we hope to be enjoying those soon too.



Mini Bus Trips

We have been enjoying our mini bus trips throughout the summer, and have been very lucky with the weather. Our trips have included Cheddar and the Gorge; Portishead Harbour and Lake Grounds; Blaise Castle Estate; Bristol Harbourside, Ashton Court and the Downs; Weston Seafront and toll road; Chew Valley Lake and Apex Wildlife Park in Burnham.



Feeding the ducks at Apex Wildlife Park

Activities Programme

We continue to have a varied programme of activities, in addition to the ones featured, including flexercise, bingo, reading and poetry groups, bowls, skittles, games, quizzes, what's in the news?, live and recorded music, visits from the local nursery children and church services – hopefully something for everyone but let Sue know if there is something else you would like to see included.

We have just joined with our local Police Community Support Officer and Yatton Primary School to be part of their mini policing project – sounds exciting, watch this space!

SOMERSET HOUSE

NEWS



Refurbishment Work

As many of you will already be aware we are having some refurbishment work done on the original, main building of the house. Over the past couple of months all the wooden sash windows have been overhauled and repaired, with new draught proofing added. The House is now covered in scaffolding so that the exterior walls, doors and newly refurbished windows can be painted. The leaky white plastic guttering at the front of the house has been replaced with new traditional cast iron guttering, more in keeping with the age of the house.



Andy, our painter and decorator is also making very good progress repainting all the internal corridors, windows and doors.

Personal Listening System

We have purchased two personal listening devices which are available for residents to borrow. They have already been successfully used for the church service as some people reported they were struggling to hear. They can be used by people who don't wear hearing aids and by people who do but may need extra amplification of voices.

If you would like any more information about this equipment please talk to Sue, who will be happy to demonstrate it and advise where it can be purchased if you would like to have your own device.

We will also be trialling a mini pa system which can benefit a group of people.

Christmas Party - Save the date!

Our Christmas Party will be on Wednesday 18th December 6.00 – 9.00 p.m. Entertainment will be provided by the Filtonaires, back by popular request. Invitations will be sent out nearer the time.

You can contact Sue or Suzi on 01934 833905 or by email sue@kingfishercares.com or suzi@kingfishercares.com