

SOMERSET HOUSE NEWSLETTER



AUTUMN 2019 | ISSUE 19

CHRISTMAS IS COMING

I wonder if it will snow?
Though it doesn't snow much in this part of the world.
I like the fresh, green decorations,
We will make some for the tables,
But just need to avoid the spikes from the holly!
A kiss under the mistletoe.
Christmas puddings and cake on stir up Sunday.
Christmas is coming!

The Christmas carols, one of the nicest parts of Christmas.
Carol singing and collecting for charity,
Wrapped up warm
Gathered under a Christmas tree.
Alcohol somewhere perhaps!
Friendship.
Sending cards to people we haven't seen for a long time.
Christmas is coming!

Father Christmas coming down the chimney,
A mince pie, and a glass of rum to keep him warm,
Rudolf, his red nosed reindeer.
Christmas stockings or pillowcases,
if you are hoping for something big!
Opening your presents on Christmas Day,
The excitement on the children's faces.
A magical time for children.
All brought about by the birth of Jesus.

By Alma, Gareth, Marjorie, Sheila
Thelma & Val



Activities & Entertainment

Chalice Handbells

We were very pleased to welcome back the Chalice Handbell group playing harvest songs and hymns.



We had a good sing-along to some of the familiar, and some not so familiar, hymns and enjoyed chatting to the group over tea and biscuits afterwards. We look forward to them returning in December to play Christmas carols.

Craft

Our varied craft activities continue including some rather cute button dolls.



Looking ahead we are already planning poppies for Remembrance Day, firework crafts with the nursery children and Christmas decorations, cards and foliage arrangements for the table.

Mini Bus Trips

Sadly, we have been beaten by the wet, wet and more wet weather in October and have had to miss some of our trips – the first time for several years! The good news is we hope to arrange a couple of dates with the Yeo Valley LIONS towards the end of November or beginning of December so that we can go and look at the Christmas decorations in Cadbury Garden Centre, take time for a spot of retail therapy, Christmas shopping and, of course, a cuppa and a festive cake.

Our Family and Friends Autumn Event: Charity Tea Party

Our Guide Dogs Charity Tea Party

Our Guide Dogs Charity Tea Party
It was such a lovely afternoon.
The music was very soothing.....
But didn't send me to sleep.
There was a variety of music,
From folksy jigs to sing-alongs
Covering most things -
It was good!
It was such a lovely afternoon!

We were pleased to be visited by a guide dog puppy.
A German Shepherd with a beautiful coat -
Lovely colourings.
He was very knowing, very good
He didn't miss a trick.
A beautiful dog,
What a shame we can't remember his name!
It was such a lovely afternoon!

All the cakes were delicious
A nice mixture – a choice for everyone.
All the work put into it
And a lot of thought.
It seemed to keep people happily occupied all afternoon
It was very interesting and lovely
It's such a shame there were not more visitors.
It WAS a really, lovely afternoon!

Written by Alma, Elsie, Gareth, Val and Sheila in Poetry Group



A big thank you to all the cooks. We raised **£54** for Guide Dogs for the Blind just from the sale of cakes. A grand total of **£208** was raised on the day.



Entertainment was provided by the lovely Moonfire, a new duo to Somerset House, who proved very popular and we hope to welcome back again soon.

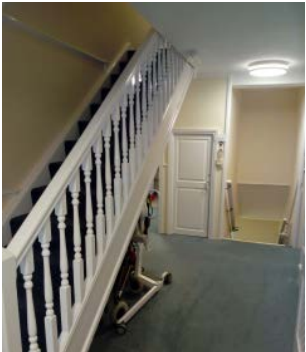


Well.....it had to be done!



Refurbishment Work Update

Andy, our painter and decorator, has almost finished painting internally and externally - just the sash windows left. Many thanks to everyone for their patience and understanding while the work has been going on. Not least, thanks to Andy, who has very much become “one of our team”! The corridors have new curtains, and some areas have brighter, LED motion sensitive lights. New carpet will be going down on the stairs and landing in the original main house soon. Together with the radiator covers, installed earlier this year, we are looking quite smart!



The scaffolding is now down revealing the fresh, external face of Somerset House!



Resident Survey Results

Thank you to all those who took the time to respond to our survey. Overall the responses were very positive with 95.9% “tending to agree” or “strongly agreeing” that we met our targets and standards for the key statements, following the CQC Key Themes of are we “Safe”, “Efficient”, “Caring”, “Responsive” and “Well Led”. Only 1.1% of replies “tended to disagree” or “strongly disagree” with the statement. Full results, together with comments and action plans, are posted on our notice boards.

Christmas Party 18th December!

You can contact Sue or Suzi on 01934 833905 or by email sue@kingfishercares.com or suzi@kingfishercares.com